

*This unit offers anti-siphon protection.*

The Woodford Model 25 drains as handle is shut off even if hose is attached. This faucet is designed for outside residential water service applications and intended for irrigation purposes.

#### SPECIFICATIONS:

MODEL 25 - Approved under ASSE Standard 1019-B and listed by IAPMO®. Meets Government Specification WW-541b Type 205.

#### Vacuum Breaker - Anti-Siphon

NIDEL® model 34HA with 3/4" male hose thread. Approved under ASSE Standard 1011. Canadian Standards Association and listed by IAPMO®.

#### FEATURES:

**EXTERIOR FINISH** - Brass

**VALVE** - Molded nitrile suitable for hot water.

**NOZZLE** - 3/4" male hose thread.

**NO LEAD SOLDER** - All solder joints.

**PLUNGER** - Hemispherical cushion type.

**STEM SCREW** - DELRIN®

**HEAD NUT** - Brass

**HANDLE** - Metal. (Optional Tee Key)

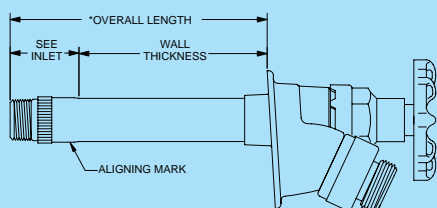
**INLETS** - As shown.

**MAX PRESSURE** - 125 p.s.i.

**MAX TEMPERATURE** - 120° F

**NOTICE** - To close and drain, turn handle clockwise until seated and water drains out of the drain hole or faucet may freeze and burst. Vacuum Breaker replacement is recommended every 3-5 years.

#### Rough-In Dimensions



Wall Thickness (inches)

|     |     |     |     |     |     |     |     |     |     |     |
|-----|-----|-----|-----|-----|-----|-----|-----|-----|-----|-----|
| 4   | 6   | 8   | 10  | 12  | 14  | 16  | 18  | 20  | 22  | 24  |
| 2.0 | 2.1 | 2.2 | 2.3 | 2.4 | 2.5 | 2.7 | 2.9 | 3.1 | 3.3 | 3.5 |

Shipping Wt. (lbs)

Approx. Shipping Weight Each

\*Overall Length Dimension: Add wall thickness and inlet option length shown in chart at right.

Patent informaion available at :

<http://www.woodfordmfg.com/Woodford/patents/>

For Installation/Troubleshooting Instructions go to:

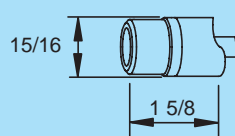
[www.woodfordmfg.com](http://www.woodfordmfg.com) or call 1-800-621-6032



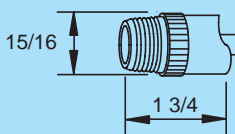
## Anti-Siphon Automatic Draining Freezeless Wall Faucet Model 25



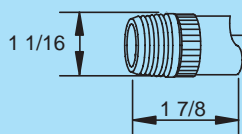
#### Inlet Descriptions



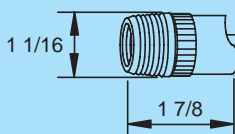
**C Inlet**  
COMBINATION  
Copper Sweat Fitting  
1/2" K, L or M Inside  
3/4" M Only Outside



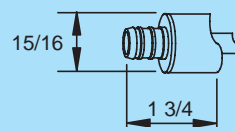
**CP Inlet**  
COMBINATION  
1/2" Male Pipe Thread  
1/2" Female Sweat



**CP3 Inlet**  
COMBINATION  
3/4" Male Pipe Thread  
3/4" Female Sweat

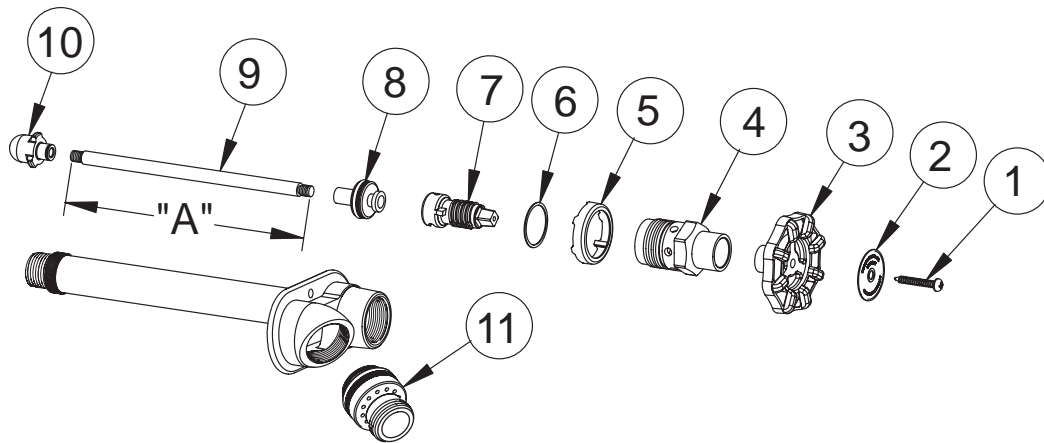


**P Inlet**  
COMBINATION  
1/2" Female Pipe Thread  
3/4" Male Pipe Thread



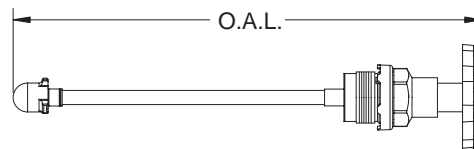
**PX Inlet**  
1/2" PEX Tube Fitting  
**PX3 INLET**  
3/4" PEX Tube Fitting

*When ordering, specify model , inlet and wall thickness.*



### MODEL 25 PARTS LIST

| ITEM | PART#   | DESCRIPTION                             |
|------|---------|---|
| 1    | 30234   | Handle Screw                            |
| 2    | 30438   | I.D. Ring - Model 25                    |
| 3    | 30239   | Wheel Handle - Metal                    |
| 4    | 30241   | Head Nut - Brass                        |
| 5    | 30236   | Drain Guard                             |
| 6    | 30245   | Head Nut Gasket                         |
| 7    | 30238   | Stem Screw                              |
| 8    | 35280   | Drain Valve Assembly                    |
| 9    | 303XX   | Operating Rod (See Chart)               |
| 10   | 30230   | Plunger Assembly                        |
| 11   | 34HA-BR | 34HA Vacuum Breaker - brass             |
|      | RK-25   | Repair Kit (Includes items 1, 3-8 & 10) |



### OPERATING ROD ASSEMBLY INCLUDES ITEMS 1 THRU 10

| Wall Thickness | Overall Length | Part No. |
|----------------|----------------|----------|
| CC             | 5"             | 35501    |
| 4              | 8"             | 35504    |
| 6              | 10"            | 35506    |
| 8              | 12"            | 35508    |
| 10             | 14"            | 35510    |
| 12             | 16"            | 35512    |
| 14             | 18"            | 35514    |
| 16             | 20"            | 35516    |
| 18             | 22"            | 35518    |
| 20             | 24"            | 35520    |
| 22             | 26"            | 35522    |
| 24             | 28"            | 35524    |

### OPERATING ROD DIM "A"

| Wall Thickness | Length   | Part No. |
|----------------|----------|----------|
| 4              | 4-7/16"  | 30304    |
| 6              | 6-7/16"  | 30306    |
| 8              | 8-7/16"  | 30308    |
| 10             | 10-7/16" | 30310    |
| 12             | 12-7/16" | 30312    |
| 14             | 14-7/16" | 30314    |
| 16             | 16-7/16" | 30316    |
| 18             | 18-7/16" | 30318    |
| 20             | 20-7/16" | 30320    |
| 22             | 22-7/16" | 30322    |
| 24             | 24-7/16" | 30324    |



For more information contact...

## WOODFORD MANUFACTURING COMPANY, LLC.

2121 Waynoka Road, Colorado Springs, Colorado 80915 • Phone: (800) 621-6032 • Fax: (800) 765-4115

To view our complete product line visit: [www.woodfordmfg.com](http://www.woodfordmfg.com) or email: [sales@woodfordmfg.com](mailto:sales@woodfordmfg.com)