



Flexi-Fin® Pipe Insulator

Flexi-Fin® Pipe Insulator For Wood & Metal Studs

Features patented fin design. Exterior fins securely fasten insulator to both wood and metal studs. Ideal for potable and hydronic water systems. Secure copper, CPVC and PEX. Drill 1-3/8" hole. Beige in color. Patented design. Made in the U.S.A.

PART NUMBER	DESCRIPTION	PARTS/BAG	MSTR CTN QTY	LBS
P-2086	1/2" CTS	100	1000	21
P-2087	3/4" CTS	100	1000	17.5
P-2089	1" CTS	100	300	6.5

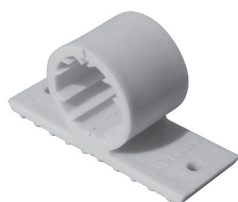


Flexi-Fin® Insulating Suspension

Flexi-Fin® Insulating Suspension

Features patented fin design. High-ear design allows installation in hard-to-reach areas. Secures copper, CPVC and PEX pipe to both wood and metal framework. Use in both residential and commercial construction. Beige in color. Patented design. Made in the U.S.A.

PART NUMBER	DESCRIPTION	PARTS/BAG	MSTR CTN QTY	LBS
P-2062	1/2" CTS	100	1000	13
P-2063	3/4" CTS	100	1000	15.5
P-2064	1" CTS	50	250	6
P-2056	1-1/4" CTS	50	800	26.5
P-2058	1-1/2" CTS	25	600	23.5
P-2060	2" CTS	25	300	15



Flexi-Fin® Pipe Clamp

Flexi-Fin® Pipe Clamp

Patented fin design. Secures copper, CPVC and PEX pipe to both wood and metal framework. Use in both residential and commercial construction. Beige in color. Made in the U.S.A.

PART NUMBER	DESCRIPTION	PARTS/BAG	MSTR CTN QTY	LBS
P-2031	1/2" CTS	100	1000	12
P-2032	3/4" CTS	100	1000	13.5
P-2033	1" CTS	50	250	6
P-2025	1-1/4" CTS	50	800	28
P-2027	1-1/2" CTS	25	600	26
P-2029	2" CTS	25	300	21



Strut Clamp

Strut Clamp

Designed to work with channel bar. Completely encircles pipe. No tools needed for installation. Fits 1-5/8" track. Black in color. Made in the U.S.A.

PART NUMBER	DESCRIPTION	PARTS/BAG	MSTR CTN QTY	LBS
P-2041	1/2" CTS	50	1200	30.5
P-2042	3/4" CTS	50	900	27
P-2043	1" CTS	50	600	21
P-2044	1-1/4" CTS	50	600	33
P-2045	1-1/2" CTS	25	500	31
P-2046	2" CTS	25	300	23

CTS: Copper Tube Size

