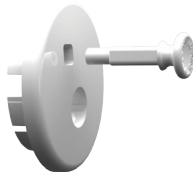


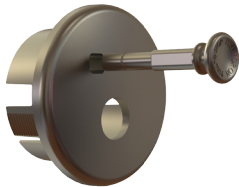
Crimp PEX Pull Stop Box™
OBPS-103-RK



Uponor PEX Pull Stop Box™
OBPS-104-RK



Trim Kit
OBPS-200-W



Satin Nickel, Deep Trim Kit
OBPS-300D-SN



Escutcheon Extension Ring
P-06923

Pull Stop Box™ For Toilets And Dishwashers

The Pull Stop Box™ takes the hassle out of angle stop installation by eliminating the need to stub out. Moving the angle stop into the wall provides a sleek and sophisticated finished look. The decorative knob controls the flow of water to the supply line by actuating the valve in a push/pull motion. The valve can be easily replaced if needed.

PART NUMBER	DESCRIPTION	MSTR CTN QTY
ROUGH-IN KITS-INCLUDES BOX, VALVE AND PROTECTIVE COVER		
OBPS-101-RK	1/2" Sweat	10
OBPS-102-RK	1/2" CPVC	10
OBPS-103-RK	1/2" Crimp PEX	10
OBPS-104-RK	1/2" Uponor PEX	10
TRIM KITS-INCLUDES KNOB AND ESCUTCHEON		
OBPS-200-W	White-Paintable	10
OBPS-200-C	Chrome	10
OBPS-200-SN	Satin Nickel	10
OBPS-200-ORB	Oil Rubbed Bronze	10
OBPS-300D-W	White-Paintable (Deep)	10
OBPS-300D-C	Chrome (Deep)	10
OBPS-300D-SN	Satin Nickel (Deep)	10
OBPS-300D-ORB	Oil Rubbed Bronze (Deep)	10
TRIM KITS-INCLUDES KNOB, ESCUTCHEON, SCREWS AND CLIP		
OBPS-400-W*	White-Paintable	10
OBPS-400D-W*	White-Paintable (Deep)	10
ACCESSORIES/REPLACEMENT PARTS		
OBPS-500D-W	Extension Kit For Trim Depth	
P-06878	3/8" Comp., 1/4 Turn Replacement Valve	
P-06923	Escutcheon Extension Ring	

* Great for ice maker, dishwasher and washing machine Pull Stop Box™ applications.



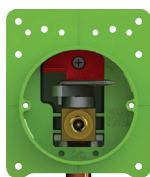
Pull Stop Box™ For Lavatories, Sinks, Dishwashers, Toilets

PART NUMBER	DESCRIPTION	MSTR CTN QTY
ROUGH-IN KITS-INCLUDES BOX, VALVE AND PROTECTIVE COVER		
OBPS-101-RK-LL	1/2" Sweat, Lead Free	10
OBPS-102-RK-LL	1/2" CPVC, Lead Free	10
OBPS-103-RK-LL	1/2" Crimp PEX, Lead Free	10
OBPS-104-RK-LL	1/2" Uponor PEX, Lead Free	10
TRIM KITS-INCLUDES KNOB AND ESCUTCHEON		
OBPS-200-W	White-Paintable	10
OBPS-200-C	Chrome	10
OBPS-200-SN	Satin Nickel	10
OBPS-200-ORB	Oil Rubbed Bronze	10
OBPS-300D-W	White-Paintable (Deep)	10
OBPS-300D-C	Chrome (Deep)	10
OBPS-300D-SN	Satin Nickel (Deep)	10
OBPS-300D-ORB	Oil Rubbed Bronze (Deep)	10
TRIM KITS-INCLUDES KNOB, ESCUTCHEON, SCREWS AND CLIP		
OBPS-400-W*	White-Paintable	10
OBPS-400D-W*	White-Paintable (Deep)	10
ACCESSORIES/REPLACEMENT PARTS		
OBPS-500D-W	Extension Kit For Trim Depth	
P-06878-LL	3/8" Compr., 1/4 Turn Replacement Valve, Lead Free	
P-06923	Escutcheon Extension Ring	

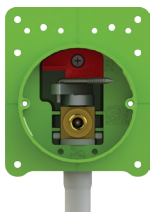
* Great for ice maker, dishwasher and washing machine Pull Stop Box™ applications.

♻️ Lead Free compliant product.

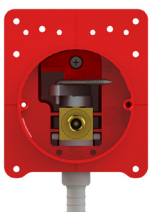




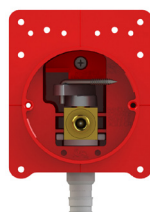
Copper Sweat Ice Maker Pull Stop Box™
OBPS-111-RK-LL



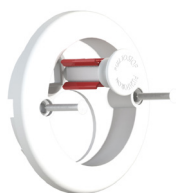
CPVC Ice Maker Pull Stop Box™
OBPS-112-RK-LL



Crimp PEX FireStop™
Ice Maker Pull Stop Box™
OBFPS-113-RK-LL



Uponor PEX FireStop™
Ice Maker Pull Stop Box™
OBFPS-114-RK-LL



FireStop™ Pull Stop Box™ Trim Kit
OBFPS-400-W*

Ice Maker Pull Stop Box™

The Ice Maker Pull Stop Box™ provides a sleek and sophisticated finished look. The decorative knob controls the flow of water to the supply line by actuating the valve in a push/pull motion. The box is strong, compact and cost-efficient.

PART NUMBER	DESCRIPTION	MSTR CTN QTY
ROUGH-IN KITS-INCLUDES BOX, VALVE AND PROTECTIVE COVER		
OBPS-111-RK-LL	1/2" Sweat, Lead Free	10
OBPS-112-RK-LL	1/2" CPVC, Lead Free	10
OBPS-113-RK-LL	1/2" Crimp PEX, Lead Free	10
OBPS-114-RK-LL	1/2" Uponor PEX, Lead Free	10
TRIM KITS-INCLUDES KNOB, ESCUTCHEON, SCREWS AND CLIP		
OBPS-400-W*	White-Paintable	10
OBPS-400D-W*	White-Paintable (Deep)	
ACCESSORIES/REPLACEMENT PARTS		
P-06979-LL	1/4" Comp., 1/4 Turn Replacement Valve, Lead Free	
OBPS-500D-W	Extension Kit For Trim Depth	
P-06923	Escutcheon Extension Ring	

* Great for ice maker, dishwasher and washing machine Pull Stop Box™ applications.

✓ Lead Free compliant product.



FireStop™ Ice Maker Pull Stop Box™

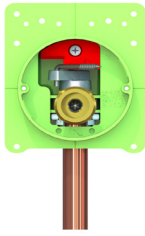
The FireStop™ Ice Maker Pull Stop Box™ is constructed of fire resistant PVC with a factory mounted intumescent pad. The OBFPS series are Warnock Hersey certified to ASTM E-814 and CAN/ULC S115 with 1 hour and 2 hour listings. Suitable for wood or metal studs and for all pipe types.

PART NUMBER	DESCRIPTION	MSTR CTN QTY
ROUGH-IN KITS-INCLUDES BOX, VALVE AND PROTECTIVE COVER		
OBFPS-111-RK-LL	1/2" Sweat, Lead Free	10
OBFPS-112-RK-LL	1/2" CPVC, Lead Free	10
OBFPS-113-RK-LL	1/2" Crimp PEX, Lead Free	10
OBFPS-114-RK-LL	1/2" Uponor PEX, Lead Free	10
TRIM KITS-INCLUDES KNOB, ESCUTCHEON, SCREWS AND CLIP		
OBFPS-400-W*	White-Paintable	10
OBFPS-400D-W*	White-Paintable (Deep)	10
ACCESSORIES/REPLACEMENT PARTS		
P-06979-LL	1/4" Comp., 1/4 Turn Replacement Valve, Lead Free	
P-06923	Escutcheon Extension Ring	

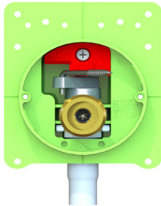
* Great for ice maker, dishwasher and washing machine Pull Stop Box™ applications.

✓ Lead Free compliant product.

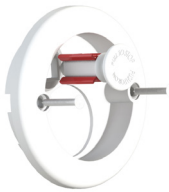




Copper Sweat Washing Machine Pull Stop Box™
OBPS-121-RK



CPVC Washing Machine Pull Stop Box™
OBPS-122-RK



Pull Stop Box™ Trim Kit
OBPS-400-W*

Washing Machine Pull Stop Box™

The Washing Machine Pull Stop Box™ provides a sleek and sophisticated finished look. The decorative knob controls the flow of water to the supply line by actuating the valve in a push/pull motion. The boxes are strong and compact with an adjustable layout.

PART NUMBER	DESCRIPTION	MSTR CTN QTY
ROUGH-IN KITS-INCLUDES BOX, VALVE AND PROTECTIVE COVER		
OBPS-121-RK	1/2" Sweat	10
OBPS-122-RK	1/2" CPVC	10
OBPS-123-RK	1/2" Crimp PEX	10
OBPS-124-RK	1/2" Uponor PEX	10
TRIM KITS-INCLUDES KNOB, ESCUTCHEON, SCREWS AND CLIP		
OBPS-400-W*	White-Paintable	10
OBPS-400D-W*	White-Paintable (Deep)	10
DRAINS		
OBD-100	Washing Machine Drain	10
ROUGH-IN KITS-INCLUDES TWO BOXES, VALVES, PROTECTIVE COVERS, DRAIN		
OBPS-121-RK-KIT	1/2" Sweat	5
OBPS-122-RK-KIT	1/2" CPVC	5
OBPS-123-RK-KIT	1/2" Crimp PEX	5
OBPS-124-RK-KIT	1/2" Uponor PEX	5
ACCESSORIES/REPLACEMENT PARTS		
OBPS-500D-W	Extension Kit For Trim Depth	
P-06881	3/4" GHT, 1/4 Turn Replacement Valve, Lead Free	
P-06923	Escutcheon Extension Ring	

* Great for ice maker, dishwasher and washing machine Pull Stop Box™ applications.

