

SUBMITTAL SHEET

JOB NAME	ITEM TAG
JOB LOCATION	PART NUMBER
CONTRACTOR	DATE
ENGINEER APPROVAL	DATE

LEAD FREE FULL PORT PRESS-TO-CONNECT SWING CHECK VALVE

P-451NL

Lead-free design is suitable for all no-lead potable water installations, in full compliance of the National lead-free plumbing law (111-380).

Press-to-connect end connections are designed for installation onto ASTM B88 types K, L, and M hard-drawn copper tubing. Coiled (annealed) soft copper tubing is not recommended, but can be used if ends are made round.

A durable, full-pattern cast brass body resists distortion and maintains sealing integrity after the pressing process.

Large, integral seat and disc sealing surfaces assure positive closure.

T-pattern body permits either vertical (upward flow only) or horizontal (assembly cap upright) installations.

Available in nominal tubing sizes 1/2" to 2".

Working Pressure, Non Shock (PSI)

Cold working pressure (CWP): 200 psi

Saturated steam (WSP): Not suitable for steam service

DIMENSIONS

Size	A	B	C (Insertion depth)
1/2"	2.87	1.38	3/4"
3/4"	3.27	1.56	15/16"
1"	3.62	1.77	15/16"
1-1/4"	4.04	2.11	1"
1-1/2"	4.98	2.34	1-3/8"
2"	5.98	2.60	1-9/16"

MATERIAL SPECIFICATION

PART	MATERIAL	SPECIFICATION
1 Body	Lead-free brass	UNS Alloy C46500
2 Assembly cap	Lead-free brass	UNS Alloy C46500
3 Disc	Lead-free brass	UNS Alloy C46500
4 Cap gasket	PTFE	Commercial grade
5 Hinge pin	Forged brass	ASTM B16 UNS C36000
6 Pin plug	Lead-free brass	UNS Alloy C46500
7 Socket O-rings (2)	EPDM rubber	Commercial grade

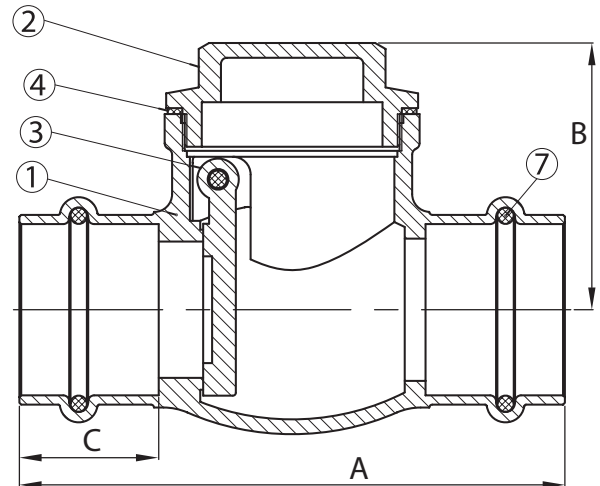
Certifications/Listings:

Third-party certified.

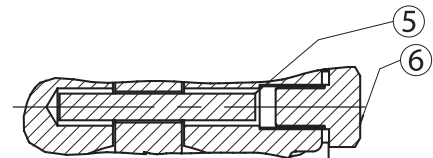
NSF/ANSI 61: Drinking water system components - Health effects.



**Pictured
P-451NL**



**Pictured
P-451NL**
Cut-away view



**Pictured
P-451NL**
Hinge pin detail