

Model# 86266-L3

Two Handle Shower Set

FEATURES & SPECIFICATIONS

- Lever Handles
- Shower Head, Arm & Flange
- 1/2" I.P.S. or 1/2" nominal copper Union Inlets
- Ceramic Disc Cartridges
- 6" Centers
- Built-in Transfer Valve, Brass Plug Included
- Built-in Transfer Valve, Brass Plug Included

FINISHES

- PC Polished Chrome

STANDARDS

- ASME A112.18.1
- ANSI A117.1 / ADA COMPLIANT



WARRANTY

- Lifetime Limited Warranty
- Lifetime Residential Warranty
- 5 Year Commercial Warranty

86266-L3/REV. 11 2016

Product Specifications subject to change without notice

Job Name _____ Date _____

Model Specified _____ QTY _____

Customer/Wholesaler _____

Contractor _____

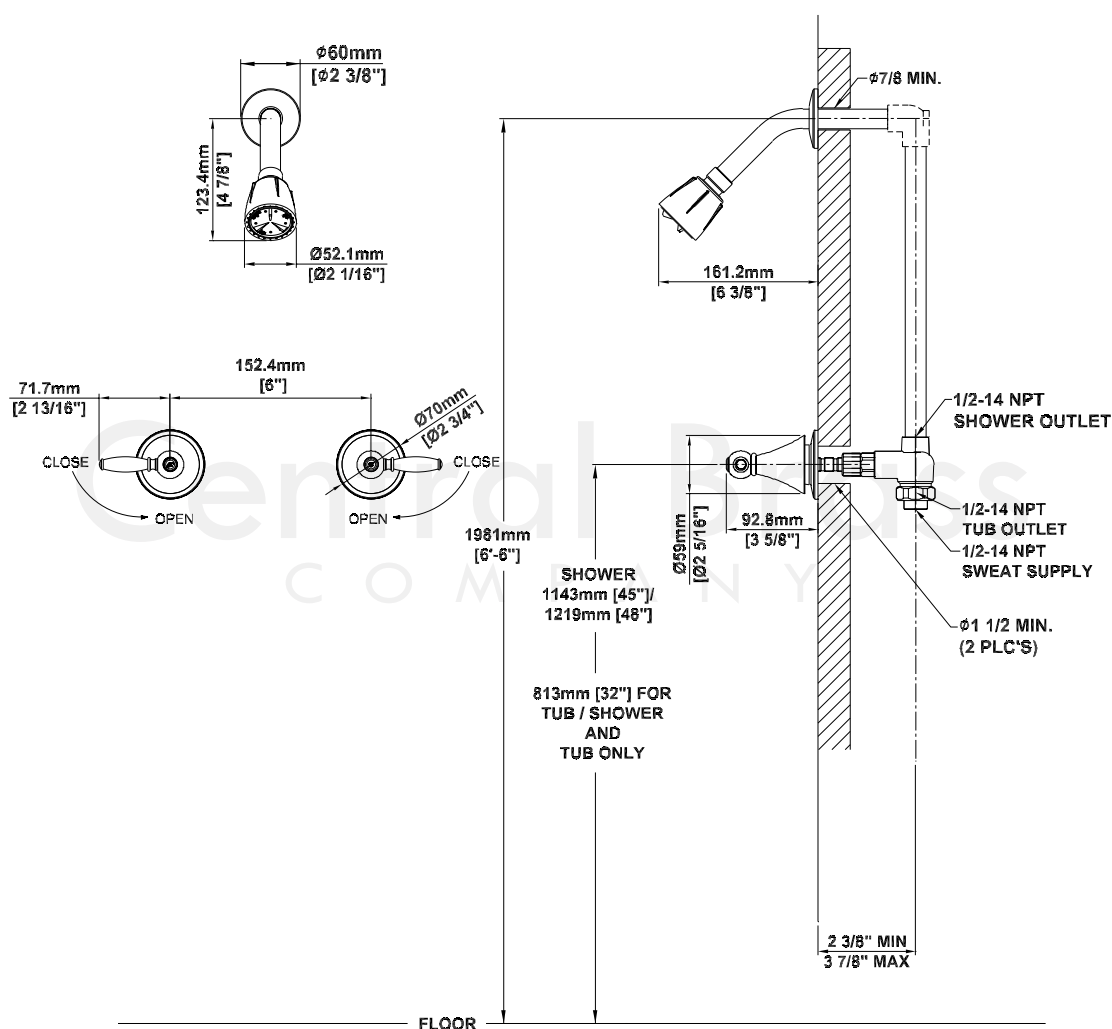
Architect/Engineer _____

Submitted as Shown _____

Submitted w/ Variations _____

Model# 86266-L3

Two Handle Shower Set



86266-L3/REV. 11 2016

Product Specifications subject to change without notice