

Model# 1172-D11AEL-Q

Two Handle Widespread Lavatory Faucet

FEATURES & SPECIFICATIONS

- 6" Elbow Handles With Color-Coded Indexes
- 4-1/2" Low Profile Spout
- Flexible Hose Connections
- Quick-Pression Quarter-Turn Stems, Replaceable Seats
- 3-Hole 6" to 24" Installation
- Brass Pop-Up Drain Assembly 1.5 GPM Flow Rate
- 1.5 GPM Flow Rate

FINISHES

- PC Polished Chrome

STANDARDS

- ASME A112.18.1
- ANSI / NSF 61, SECTION 9
- CUPC / IAPMO LISTED
- ANSI A117.1 / ADA COMPLIANT
- CONTAINS NO MORE THAN 0.25% WEIGHTED AVERAGE LEAD CONTENT



FLOW

- 1.5 GPM Flow Rate

WARRANTY

- Lifetime Limited Warranty
- Lifetime Residential Warranty
- 5 Year Commercial Warranty

1172-D11AEL-Q/REV. 11 2016

Product Specifications subject to change without notice

Job Name _____ Date _____

Model Specified _____ QTY _____

Customer/Wholesaler _____

Contractor _____

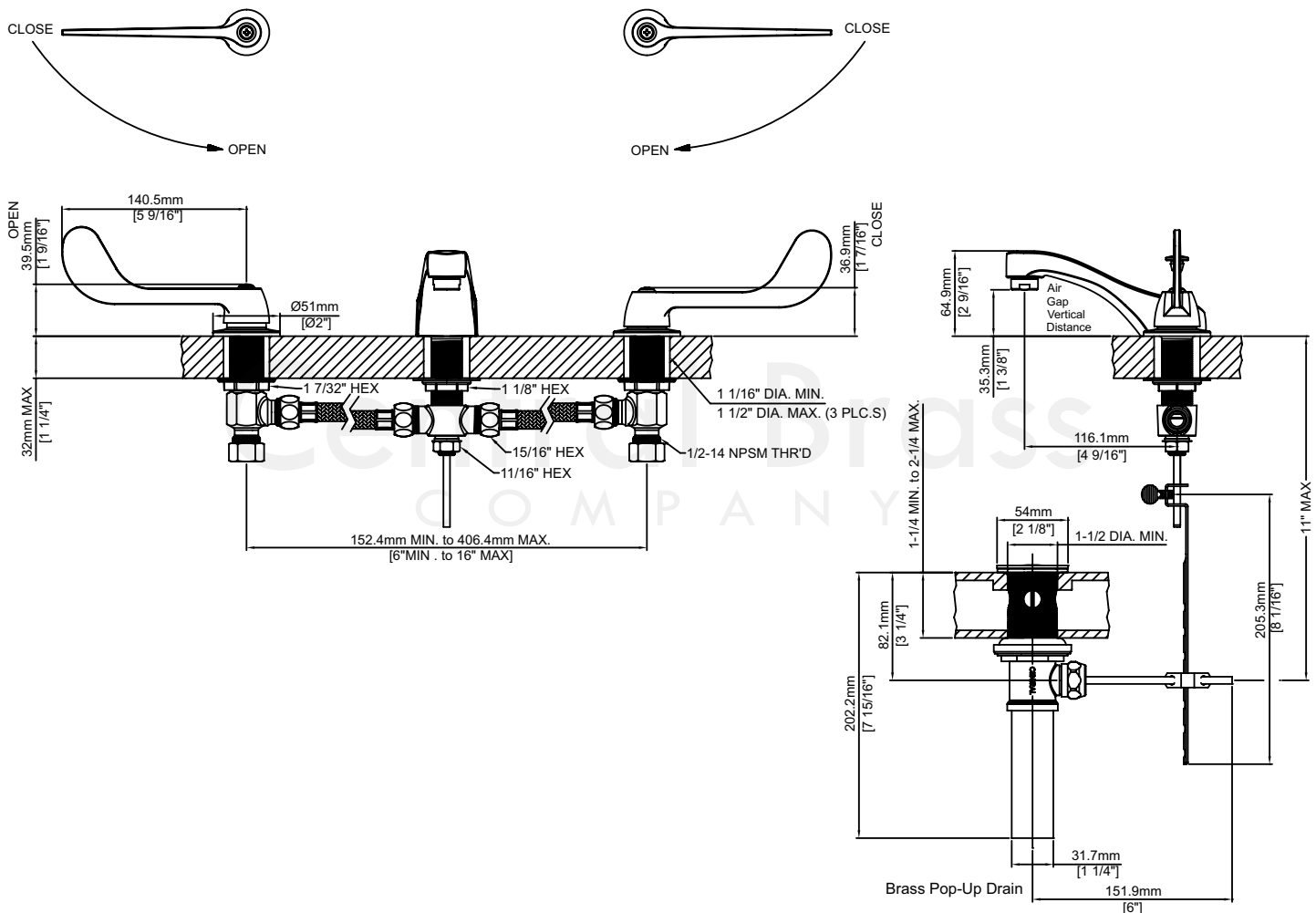
Architect/Engineer _____

Submitted as Shown _____

Submitted w/ Variations _____

Model# 1172-D11AEL-Q

Two Handle Widespread Lavatory Faucet



1172-D11AEL-Q/REV. 11 2016

Product Specifications subject to change without notice