

Model# 1137-A-Q

Two Handle Lavatory Faucet

FEATURES & SPECIFICATIONS

- Canopy Handles
- Quick-Pression Quarter-Turn Stems, Replaceable Seats
- 3-Hole 4" Installation
- With Hole Cover 1.5 GPM Flow Rate
- 1.5 GPM Flow Rate

FINISHES

- PC Polished Chrome

STANDARDS

- ASME A112.18.1
- ANSI / NSF 61, SECTION 9
- CUPC / IAPMO LISTED
- ANSI A117.1 / ADA COMPLIANT
- CONTAINS NO MORE THAN 0.25% WEIGHTED AVERAGE LEAD CONTENT



FLOW

- 1.5 GPM Flow Rate

WARRANTY

- Lifetime Limited Warranty
- Lifetime Residential Warranty
- 5 Year Commercial Warranty

1137-A-Q/REV. 11 2016

Product Specifications subject to change without notice

Job Name _____ Date _____

Model Specified _____ QTY _____

Customer/Wholesaler _____

Contractor _____

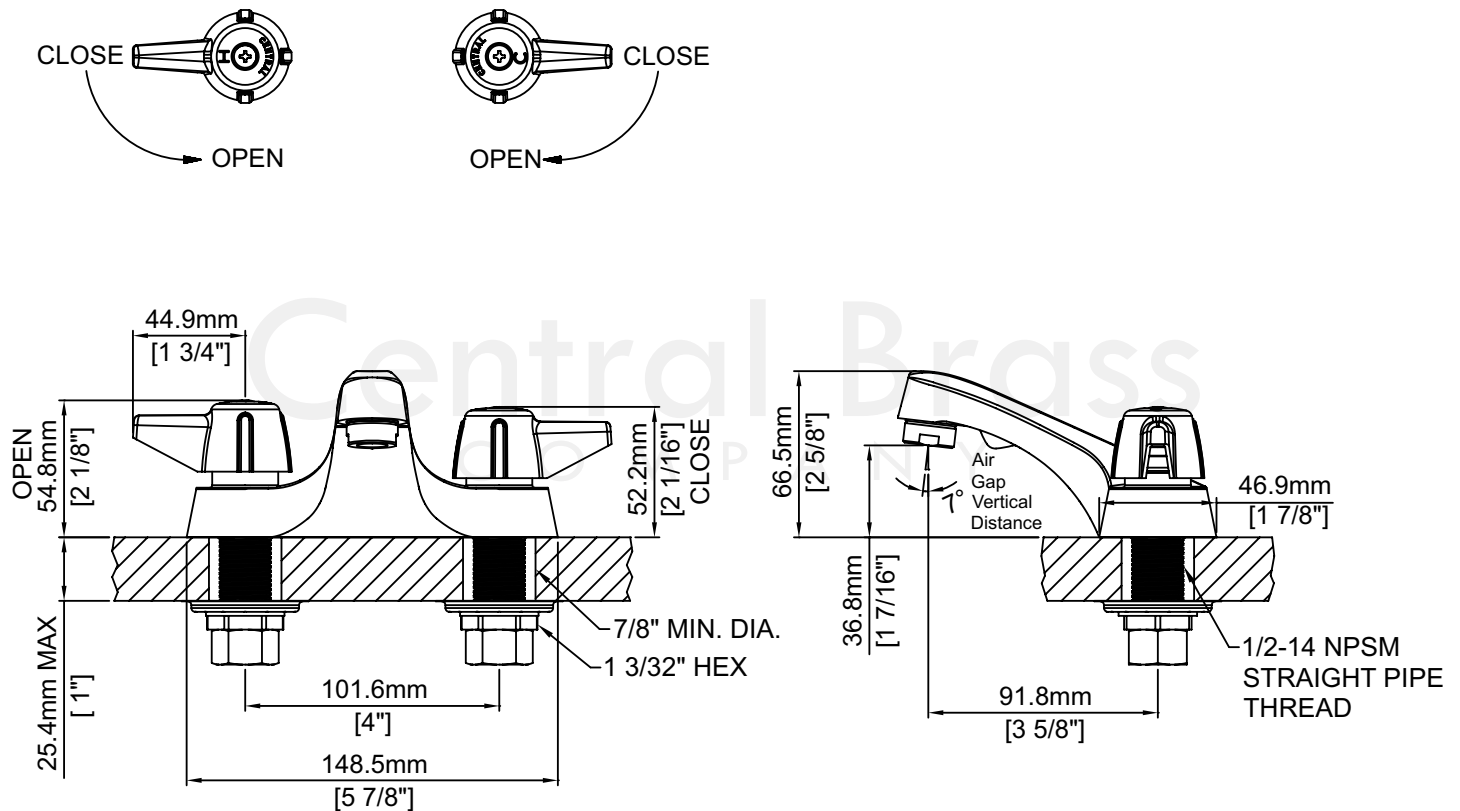
Architect/Engineer _____

Submitted as Shown _____

Submitted w/ Variations _____

Model# 1137-A-Q

Two Handle Lavatory Faucet



1137-A-Q/REV. 11 2016

Product Specifications subject to change without notice