

## Model# 0805

### Two Handle Valve Set

#### FEATURES & SPECIFICATIONS

- Canopy Handles
- 1/2" CXC Inlets
- Replaceable Seats
- 8" Centers
- Built-in Transfer Valve, Brass Plug Included
- Built-in Transfer Valve, Brass Plug Included

#### FINISHES

- PC Polished Chrome

#### STANDARDS

- ASME A112.18.1



#### WARRANTY

- Lifetime Limited Warranty
- Lifetime Residential Warranty
- 5 Year Commercial Warranty

0805/REV. 11 2016

Product Specifications subject to change without notice

Job Name \_\_\_\_\_ Date \_\_\_\_\_

Model Specified \_\_\_\_\_ QTY \_\_\_\_\_

Customer/Wholesaler \_\_\_\_\_

Contractor \_\_\_\_\_

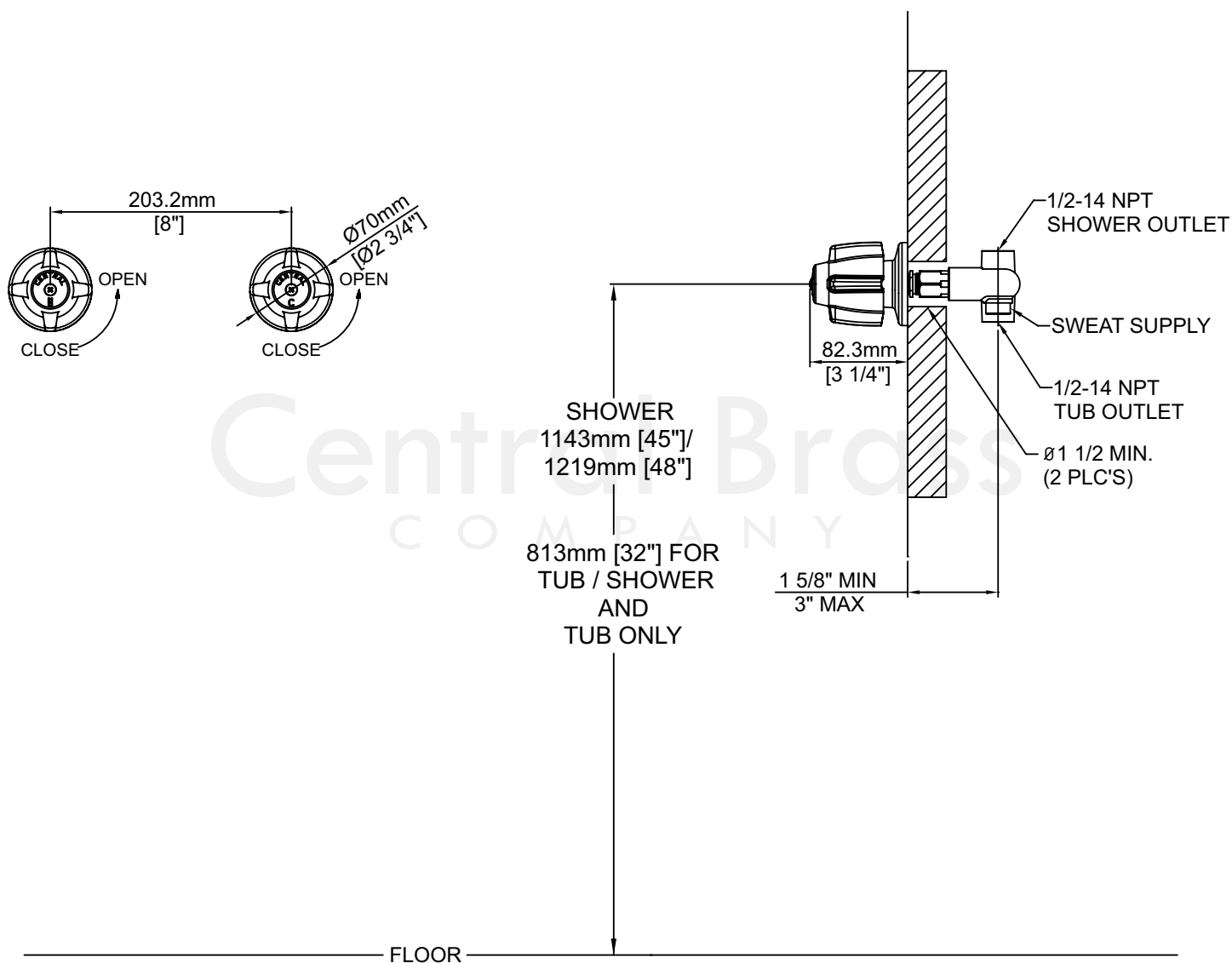
Architect/Engineer \_\_\_\_\_

Submitted as Shown \_\_\_\_\_

Submitted w/ Variations \_\_\_\_\_

## Model# 0805

### Two Handle Valve Set



0805/REV. 11 2016

Product Specifications subject to change without notice