

Model# 0287-LE61-Q

Two Handle Pre-Rinse Faucet

FEATURES & SPECIFICATIONS

- 2-3/8" Lever Handle
- Overhead Swivel 12" Reach and 27-3/4" High Arm
- 26" Flexible Stainless Steel Hose
- Quick-Presson Quarter-Turn Stems, Replaceable Seats
- Back Flow Preventers
- Easy-Install 30" Flex Supply Lines With 3/8" Connections
- 1.1 GPM Flow Rate, 6.5 ozf Spray Force Spray Valve
- 1.1 GPM Flow Rate, 6.5 ozf Spray Force Spray Valve
- 1-Hole Installation
- Pipe Strap and Hook Assembly

FINISHES

- PC Polished Chrome

STANDARDS

- ASME A112.18.1
- ANSI / NSF 61, SECTION 9
- CUPC / IAPMO LISTED
- ANSI A117.1 / ADA COMPLIANT
- CONTAINS NO MORE THAN 0.25% WEIGHTED AVERAGE LEAD CONTENT



FLOW

- 1.1 GPM Flow Rate, 6.5 ozf Spray Force Spray Valve

WARRANTY

- Lifetime Limited Warranty
- Lifetime Residential Warranty
- 5 Year Commercial Warranty

0287-LE61-Q/REV. 11 2016

Product Specifications subject to change without notice

Job Name _____ Date _____

Model Specified _____ QTY _____

Customer/Wholesaler _____

Contractor _____

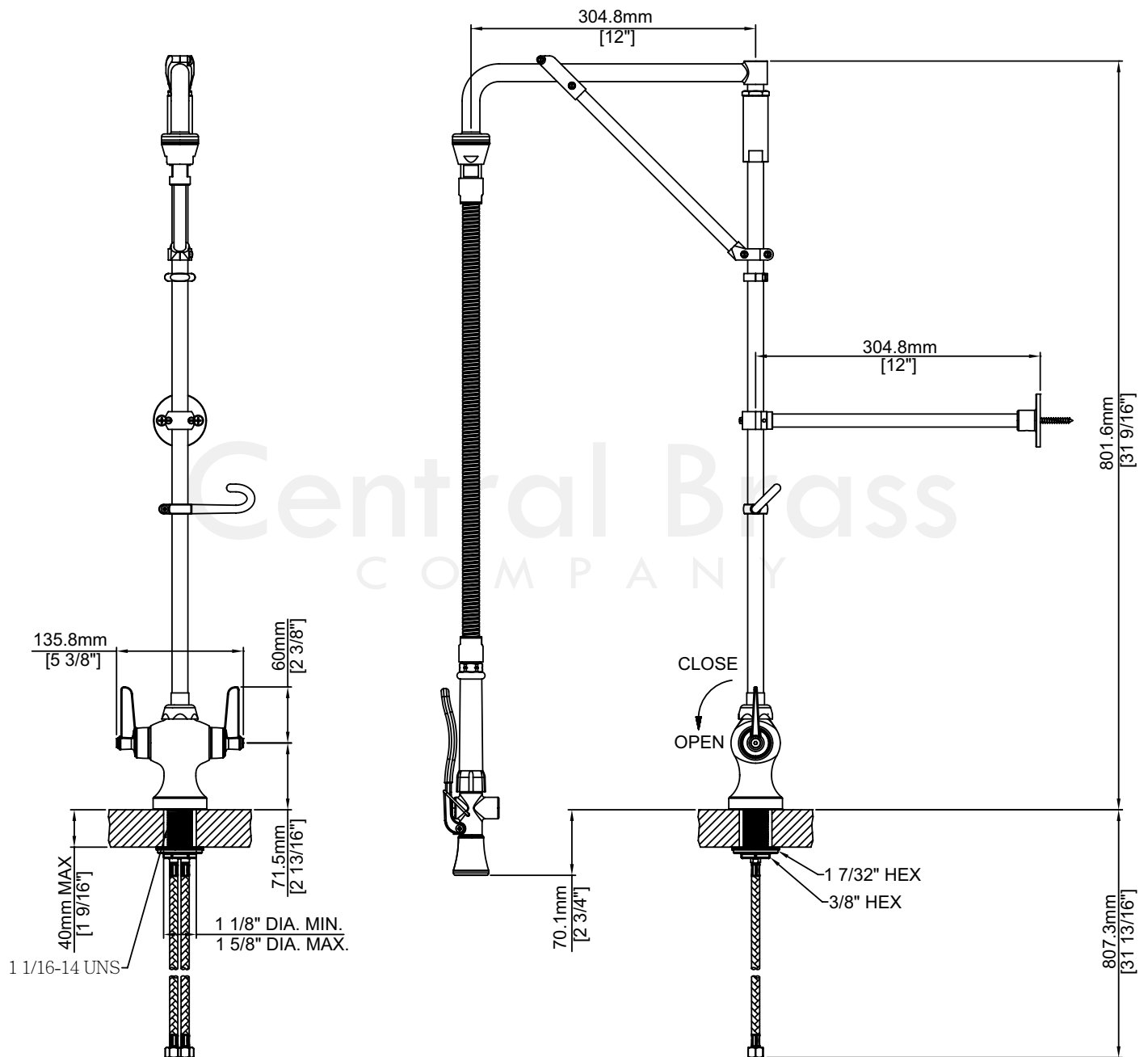
Architect/Engineer _____

Submitted as Shown _____

Submitted w/ Variations _____

Model# 0287-LE61-Q

Two Handle Pre-Rinse Faucet



0287-LE61-Q/REV. 11 2016

Product Specifications subject to change without notice