

## Model# 0054-SELS-QI

### Two Handle Wallmount Service Sink Faucet

#### FEATURES & SPECIFICATIONS

- 4" Wrist Blade Handles With Color-Coded Indexes
- 5-3/4" Rigid Spout With Pail Hook And Top Brace to Wall With Flange, Hose Thread
- 1/2-14 NPS Female Thread
- Quick-Presson Quarter-Turn Stems, Replaceable Seats, Built-in Stop:
- 2-Hole 6-1/2" to 9-1/2" Installation
- Vacuum Breaker

#### FINISHES

- PC Polished Chrome

#### STANDARDS

- ASME A112.18.1
- CUPC / IAPMO LISTED
- ANSI A117.1 / ADA COMPLIANT



#### WARRANTY

- Lifetime Limited Warranty
- Lifetime Residential Warranty
- 5 Year Commercial Warranty

0054-SELS-QI/REV. 11 2016

Product Specifications subject to change without notice

Job Name \_\_\_\_\_ Date \_\_\_\_\_

Model Specified \_\_\_\_\_ QTY \_\_\_\_\_

Customer/Wholesaler \_\_\_\_\_

Contractor \_\_\_\_\_

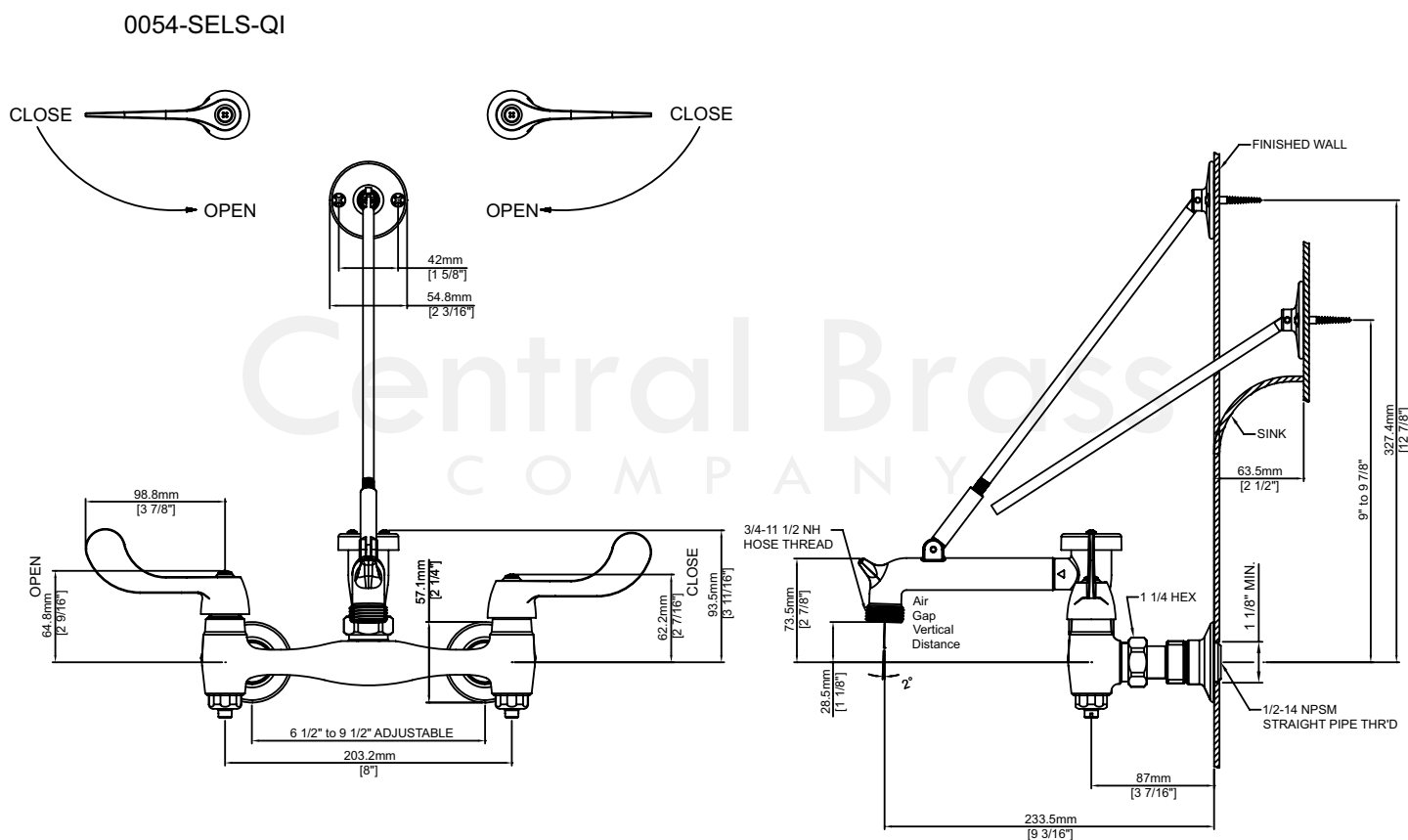
Architect/Engineer \_\_\_\_\_

Submitted as Shown \_\_\_\_\_

Submitted w/ Variations \_\_\_\_\_

## Model# 0054-SELS-QI

### Two Handle Wallmount Service Sink Faucet



0054-SELS-QI/REV. 11 2016

Product Specifications subject to change without notice