

## Model# 0048-UAELS

### Two Handle Wallmount Kitchen Faucet

#### FEATURES & SPECIFICATIONS

- 4" Wrist Blade Handles With Color-Coded Indexes
- 6" Tube Swivel Spout
- 1/2-14 NPS Female Thread
- Replaceable Seats
- 2-Hole 7-7/8" to 8-1/8" Installation
- Brass Soap Dish 1.5 GPM Flow Rate
- 1.5 GPM Flow Rate

#### FINISHES

- PC Polished Chrome

#### STANDARDS

- ASME A112.18.1
- ANSI / NSF 61, SECTION 9
- CUPC / IAPMO LISTED
- ANSI A117.1 / ADA COMPLIANT
- CONTAINS NO MORE THAN 0.25% WEIGHTED AVERAGE LEAD CONTENT



#### FLOW

- 1.5 GPM Flow Rate

#### WARRANTY

- Lifetime Limited Warranty
- Lifetime Residential Warranty
- 5 Year Commercial Warranty

0048-UAELS/REV. 11 2016

Product Specifications subject to change without notice

Job Name \_\_\_\_\_ Date \_\_\_\_\_

Model Specified \_\_\_\_\_ QTY \_\_\_\_\_

Customer/Wholesaler \_\_\_\_\_

Contractor \_\_\_\_\_

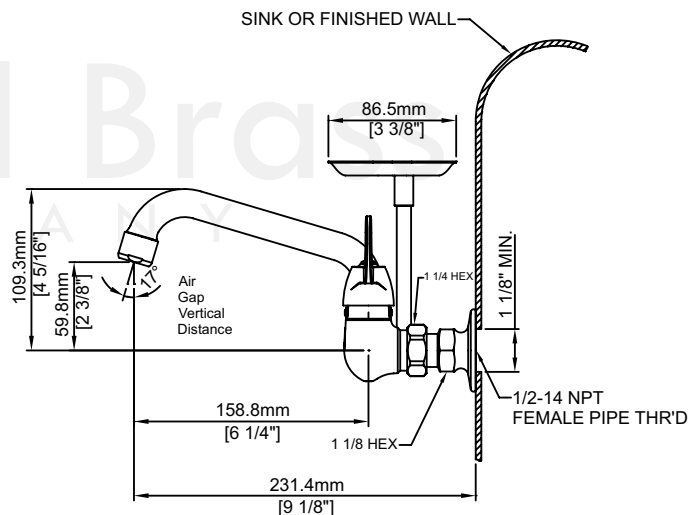
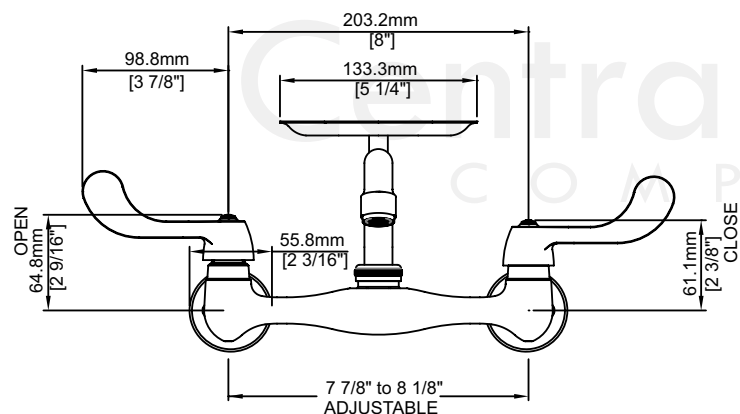
Architect/Engineer \_\_\_\_\_

Submitted as Shown \_\_\_\_\_

Submitted w/ Variations \_\_\_\_\_

## Model# 0048-UAELS

### Two Handle Wallmount Kitchen Faucet



0048-UAELS/REV. 11 2016

Product Specifications subject to change without notice