

## Model# 0047-ULE61

### Two Handle Wallmount Pre-Rinse Faucet

#### FEATURES & SPECIFICATIONS

- 2-3/8" Lever Handle
- Overhead Swivel 12" Reach and 27-3/4" High Arm
- 26" Flexible Stainless Steel Hose
- Replaceable Seats
- Back Flow Preventers
- 1/2-14 NPS Female Thread 1.1 GPM Flow Rate, 6.5 ozf Spray Force Spray Valve
- 1.1 GPM Flow Rate, 6.5 ozf Spray Force Spray Valve
- 2-Hole 7-7/8" to 8-1/8" Installation
- Pipe Strap and Hook Assembly

#### FINISHES

- PC Polished Chrome

#### STANDARDS

- ASME A112.18.1
- ANSI / NSF 61, SECTION 9
- CUPC / IAPMO LISTED
- ANSI A117.1 / ADA COMPLIANT
- CONTAINS NO MORE THAN 0.25% WEIGHTED AVERAGE LEAD CONTENT



#### FLOW

- 1.1 GPM Flow Rate, 6.5 ozf Spray Force Spray Valve

#### WARRANTY

- Lifetime Limited Warranty
- Lifetime Residential Warranty
- 5 Year Commercial Warranty

0047-ULE61/REV. 11 2016

Product Specifications subject to change without notice

Job Name \_\_\_\_\_ Date \_\_\_\_\_

Model Specified \_\_\_\_\_ QTY \_\_\_\_\_

Customer/Wholesaler \_\_\_\_\_

Contractor \_\_\_\_\_

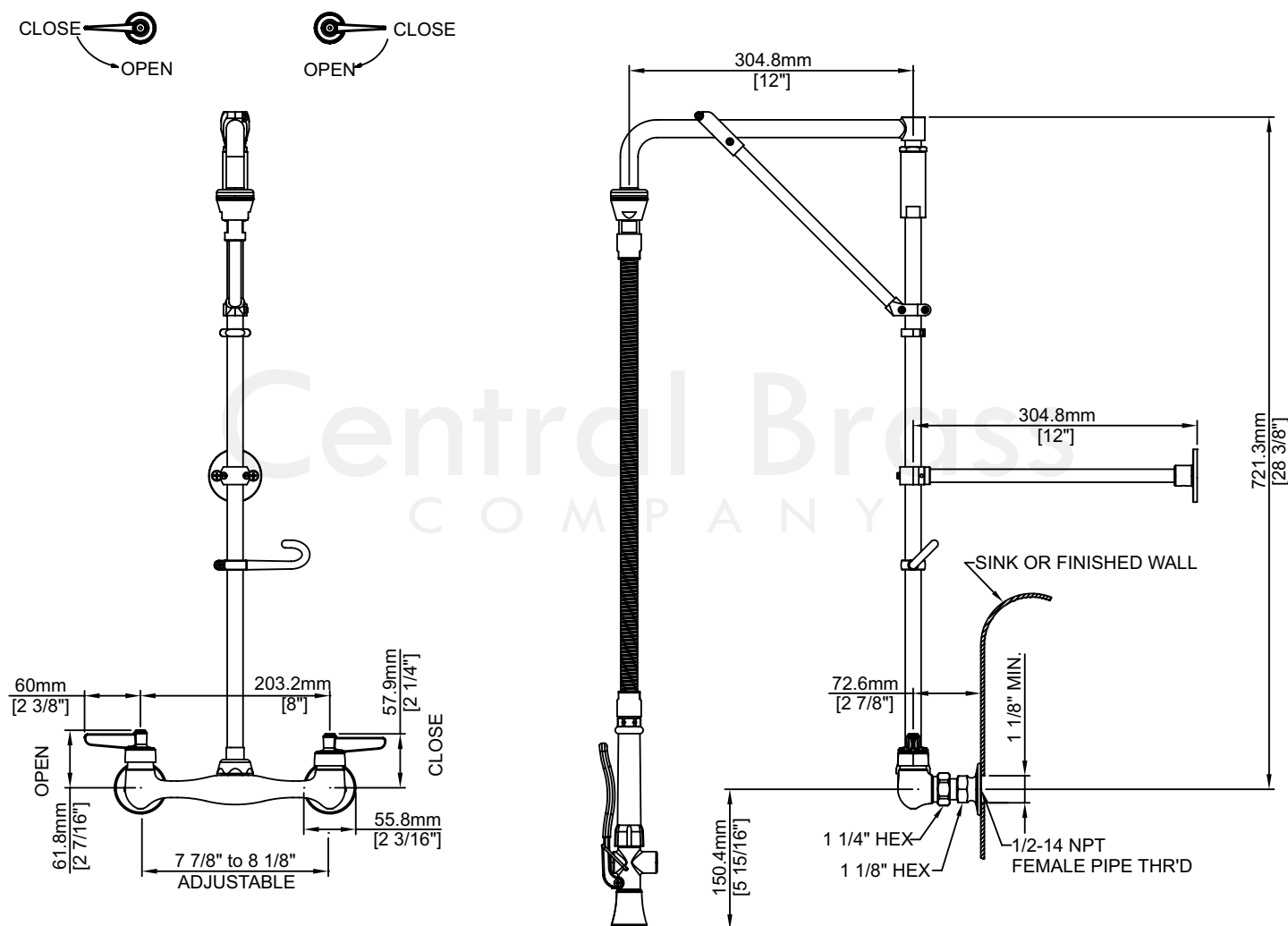
Architect/Engineer \_\_\_\_\_

Submitted as Shown \_\_\_\_\_

Submitted w/ Variations \_\_\_\_\_

## Model# 0047-ULE61

### Two Handle Wallmount Pre-Rinse Faucet



0047-ULE61/REV. 11 2016

Product Specifications subject to change without notice