

# 94VLF-A series

press end ball valve  
**lead free**



Job Name:	
Job Location:	
Engineer:	
Contractor:	
Tag:	
PO#:	
Rep:	
Wholesale Dist.:	

## DESCRIPTION

The Aalberts integrated piping systems International™ 94VLF-A Series Lead Free\* Two-Piece Press Ball Valve is ideal for installation in most plumbing and heating systems, including potable water.

## FEATURES

- Lead Free\*, ANSI 3rd Party Certified
- Full-Port Flow
- PTFE Seats and Packing
- Adjustable Stem Packing
- Leak Before Press® Feature
- Corrosion Resistant Materials
- 100% Factory Tested
- 2 Year Warranty

## APPROVALS

- MSS SP-110 Ball Valves
- IAPMO/ANSI Z1157 Ball Valves
- IAPMO PS-117 Press Connections
- NSF/ANSI/CAN 61 Water Quality
- NSF/ANSI/CAN 372 Lead Free

## PERFORMANCE RATING

- Maximum Operating Pressure: 250 psig
- Temperature Range: 0°F - 250°F

## APPROVED APPLICATIONS

- Water Including Potable Water
- Hydronic Heating (90% Glycol Max)
- Not Suitable for Flammable Gas Service
- Designed for Direct Mechanical Connection to ASTM B88-Type K, L, and M Copper Tubing in the Hard Drawn Condition
- Not Compatible with Soft Annealed Copper Tubing

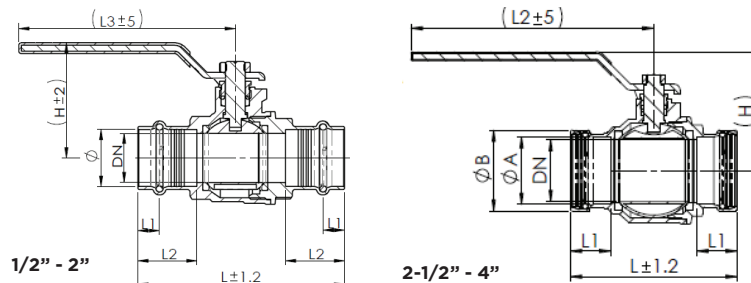
## STANDARD MATERIALS LIST

<b>BODY</b>	Lead Free Brass (DZR)
<b>RETAINER</b>	Lead Free Brass (DZR)
<b>BALL</b>	Lead Free Brass (DZR)
<b>STEM</b>	Lead Free Brass (DZR)
<b>GLAND NUT</b>	Std. Rod Brass
<b>WASHER</b>	PTFE
<b>SEATS</b>	PTFE
<b>STEM PACKING</b>	PTFE
<b>HANDLE</b>	Plated Steel / Insulated Polyvinyl
<b>STEM NUT</b>	Steel, Plated
<b>SEALING ELEMENT</b>	EPDM

## DIMENSIONS

MODEL NUMBER	SIZE (IN.)	DIMENSIONS (IN.) (MM)									2-1/4" STEM EXTENSION KIT
		DN	Ø	A	B	L	L1	L2	L3	H	
94VLF-103-01A	1/2"	15	0.63 (16.1)	-	-	3.41 (86.6)	0.43 (11)	1.1 (28)	3.82 (97)	1.66 (42.2)	78266101
94VLF-104-01A	3/4"	20	0.86 (22.5)	-	-	3.85 (97.9)	0.43 (11)	1.18 (30)	3.82 (97)	1.92 (48.7)	78266201
94VLF-105-01A	1"	25	1.13 (28.8)	-	-	4.13 (105)	0.43 (11)	1.18 (30)	4.41 (112)	2.3 (58.5)	78266301
94VLF-106-01A	1-1/4"	32	1.39 (35.2)	-	-	4.59 (116.5)	0.43 (11)	1.18 (30)	5.2 (132)	2.73 (69.3)	78266401
94VLF-107-01A	1-1/2"	40	1.63 (41.5)	-	-	5.16 (131.1)	0.51 (13)	1.38 (35)	5.2 (132)	2.93 (74.5)	78266501
94VLF-108-01A	2"	50	2.13 (54.2)	-	-	6.00 (152.5)	0.63 (16)	1.57 (40)	6.44 (163.5)	3.46 (88)	78266601
94VLF-109-01A	2-1/2"	65	-	2.64 (67)	3.15 (80)	6.5 (165)	1.57 (40)	9.45 (240)	-	4.61 (117)	78266701
94VLF-100-01A	3"	80	-	3.13 (79.6)	3.66 (93)	7.38 (187.5)	1.77 (45)	9.45 (240)	-	4.96 (126)	78266801
94VLF-10A-01A	4"	90	-	4.14 (105.1)	4.69 (119)	9.21 (234)	2.13 (54)	9.45 (240)	-	5.91 (150)	78266901

\* 3 tolerances shown apply only to mm, not inches



\*LEAD FREE: The wetted surfaces of this product shall contain no more than 0.25% lead by weighted average. Complies with Federal Public Law 111-380. ANSI 3rd party approved and listed.